

# Lockhill Village Shopping Center

2235-2251 Lockhill Selma Rd, San Antonio, TX 78231



## Space Available

- 1,568 - 4,025 SF

## Features:

- Located at the intersection of NW Military Hwy & Lockhill Selma
- High traffic counts
- Excellent visibility
- Strong retail project in North Central San Antonio
- The center has been recently renovated

## Traffic Counts

- Lockhill Selma: 14,264 VPD
- NW Military Hwy: 23,693 VPD

Demographics	1 mile	3 mile	5 mile
Total Population	15,529	122,165	309,288
Total Households	7,047	54,424	134,669
Avg HH Income	\$71,930	\$77,707	\$76,780
Population Growth 2019-24	4.47%	3.27%	4.74%

## Area Retailers:



10003 NW Military Hwy, Suite #2205  
San Antonio, TX 78231

t 210.593.0777  
f 210.593.0780

www.fulcrumsa.com

Marcus Shaffer  
210.317.5563  
marcus@fulcrumsa.com

**fulcrum**  
PROPERTY GROUP INC

# Lockhill Village Shopping Center

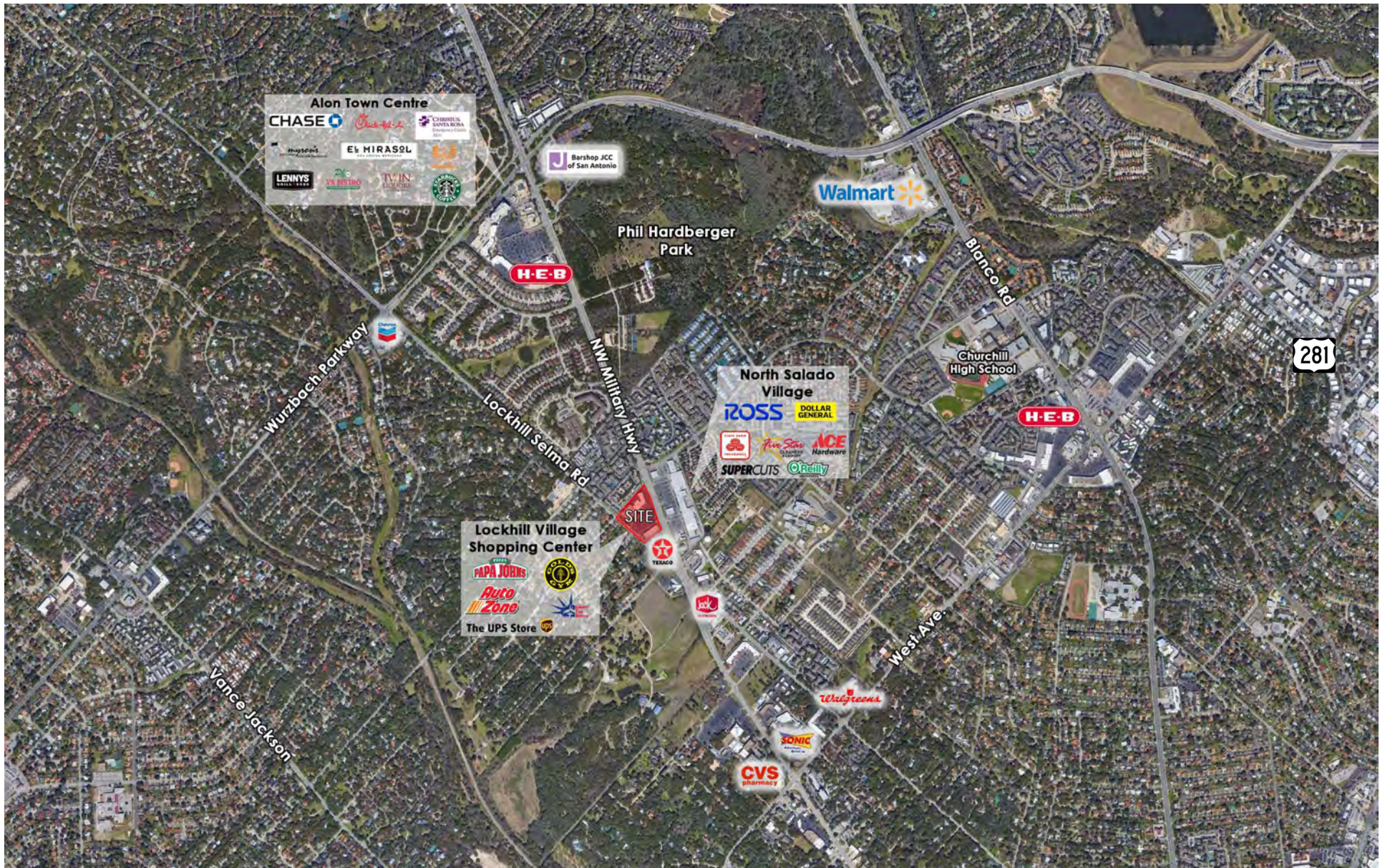
## Site Plan





# Lockhill Village Shopping Center

Location Aerial



10003 NW Military Hwy, Suite #2205  
San Antonio, TX 78231

t 210.593.0777  
f 210.593.0780

[www.fulcrumsa.com](http://www.fulcrumsa.com)

Marcus Shaffer  
210.317.5563  
[marcus@fulcrumsa.com](mailto:marcus@fulcrumsa.com)

**fulcrum**  
PROPERTY GROUP INC