



Features:

- High Growth Trade Area
- HEB Anchored Intersection
- Pads for sale or lease - Contact Broker for Pricing

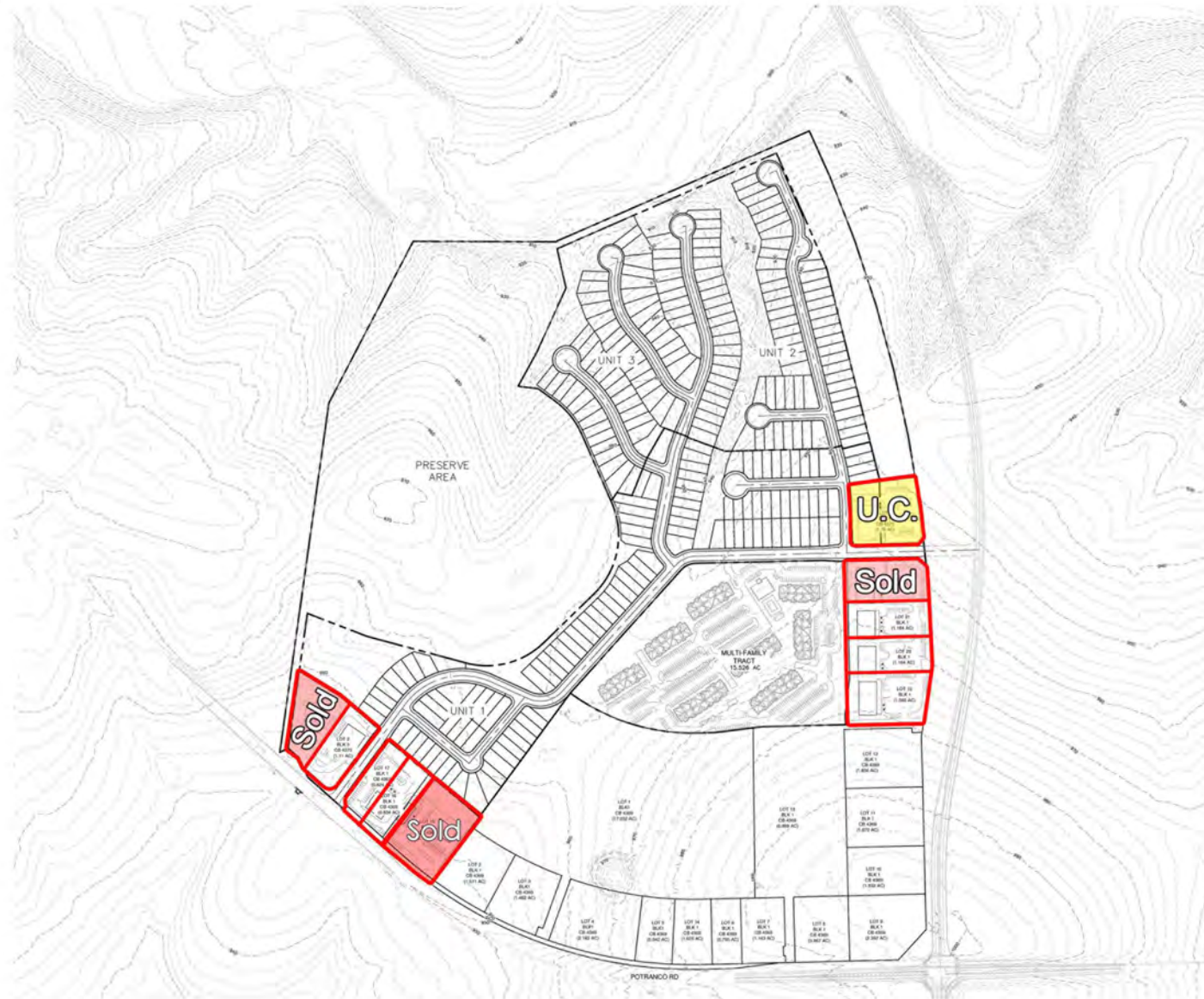
Traffic Counts

- Potranco East of SH 211: 18,933 VPD
- SH 211 South of Potranco: 16,156 VPD

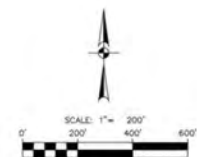
Demographics	1 mile	3 mile	5 mile
Total Population	1,802	24,858	76,277
Total Households	588	7,955	24,517
Avg HH Income	\$87,158	\$86,513	\$81,916
Population Growth 2020-25	3.44%	2.97%	3.37%

Pads Available For Sale or Lease

Site Plan



OVERALL LAND USE SUMMARY				
UNIT	ACRES	LOT TYPE	LOT COUNT	DENSITY
UNIT 1 (S1)	26.94	40' LOT	115	4.42
UNIT 2/3 (S2)	4.15	TRACTS	3	0.72
UNIT 2/3 (S2)	29.88	40' LOT	146	4.92
MULTIFAMILY (S3)	13.03	UNIT	300	23.03
TRACT (S4)	5.24	TRACTS	4	0.76
POTRANCO (S5)	4.01	TRACTS	3	0.75
RESERVE BANK (S6)	41.05	TRACTS	14	0.34
PRESERVE AREA	46.59		1	0.02



10003 NW Military Hwy, Suite #2205
San Antonio, TX 78231

t 210.593.0777
f 210.593.0780

www.fulcrumsa.com

Marcus Shaffer
210.317.5563
marcus@fulcrumsa.com

fulcrum
PROPERTY GROUP INC

Pads Available - For Sale or Lease

Location Aerial



10003 NW Military Hwy, Suite #2205
San Antonio, TX 78231

t 210.593.0777
f 210.593.0780

www.fulcrumsa.com

Marcus Shaffer
210.317.5563
marcus@fulcrumsa.com

fulcrum
PROPERTY GROUP INC