

Pads Available - For Sale or Lease

Potranco & SH 211, San Antonio, TX



Features:

- High Growth Trade Area
- HEB Anchored Intersection
- Pads for sale or lease - Contact Broker for Pricing

Traffic Counts

- Potranco East of SH 211: 18,933 VPD
- SH 211 South of Potranco: 16,156 VPD

Demographics	1 mile	3 mile	5 mile
Total Population	1,802	24,858	76,277
Total Households	588	7,955	24,517
Avg HH Income	\$87,158	\$86,513	\$81,916
Population Growth 2020-25	3.44%	2.97%	3.37%

10003 NW Military Hwy, Suite #2205
San Antonio, TX 78231

t 210.593.0777
f 210.593.0780

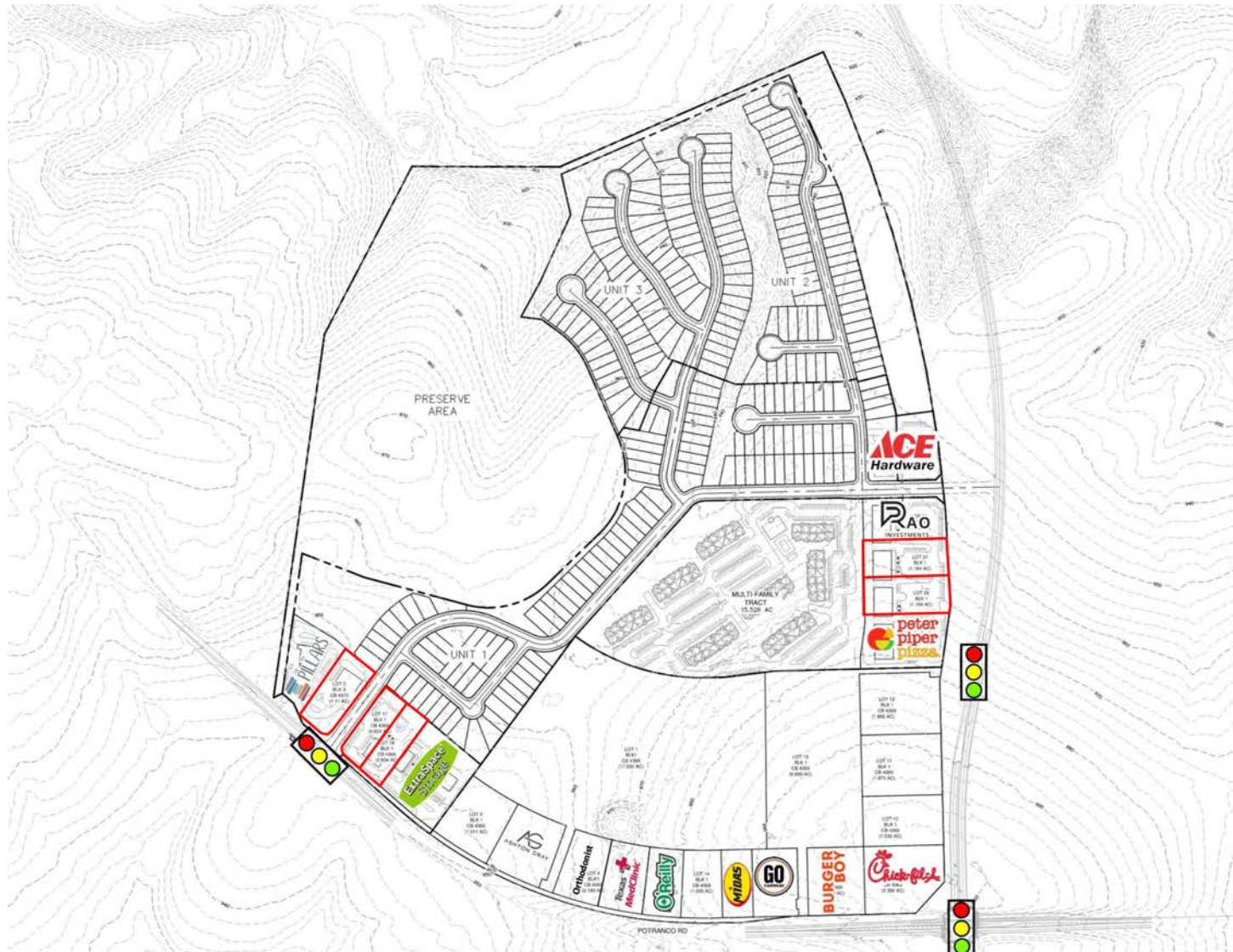
www.fulcrumsa.com

Marcus Shaffer
210.317.5563
marcus@fulcrumsa.com

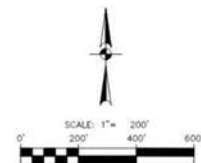
fulcrum
PROPERTY GROUP INC

Pads Available For Sale or Lease

Site Plan



OVERALL LAND USE SUMMARY				
UNIT	ACRES	LOT TYPE	LOT COUNT	DENSITY
UNIT 1 (DP)	26.04	40' LOT	115	4.42
(COM)	4.15	TRACTS	3	0.72
UNIT 2/3 (DP)	29.68	40' LOT	146	4.92
MULTI-FAMILY (MF)	15.53	UNIT	300	19.32
TRACT (COM)	5.24	TRACTS	4	0.76
POTRANCO (COM)	4.01	TRACTS	3	0.75
REDBIRD RANCH (COM)	43.65	TRACTS	14	0.34
PRESERVE AREA	46.53		1	0.02



10003 NW Military Hwy, Suite #2205
San Antonio, TX 78231

t 210.593.0777
f 210.593.0780

www.fulcrumsa.com

Marcus Shaffer
210.317.5563
marcus@fulcrumsa.com

fulcrum
PROPERTY GROUP INC

Pads Available - For Sale or Lease

Location Aerial



10003 NW Military Hwy, Suite #2205
San Antonio, TX 78231

t 210.593.0777
f 210.593.0780

www.fulcrumsa.com

Marcus Shaffer
210.317.5563
marcus@fulcrumsa.com

fulcrum
PROPERTY GROUP INC