

Stonehue Shopping Center

20323 Huebner Rd, San Antonio, TX 78258



Space Available:

- 1,500 SF
- 1,641 SF

Features:

- Located in the heart of Stone Oak - east of the Stone Oak & Huebner intersection
- Great traffic counts
- Strong retail project in North Central San Antonio

Traffic Counts

- Stone Oak Pkwy N. of Huebner: 25,984 VPD
- Huebner W. of Stone Oak Pkwy: 17,617 VPD

Demographics	1 mile	3 mile	5 mile
Total Population	12,326	74,385	185,480
Total Households	4,642	27,949	71,754
Avg HH Income	\$108,642	\$127,417	\$120,926
Population Growth 2019-24	9.58%	7.93%	7.97%

Area Retailers:



Walgreens

WELLS
FARGO



Falcon
International Bank

 **Little Caesars**

10003 NW Military Hwy, Suite #2205
San Antonio, TX 78231

t 210.593.0777
f 210.593.0780

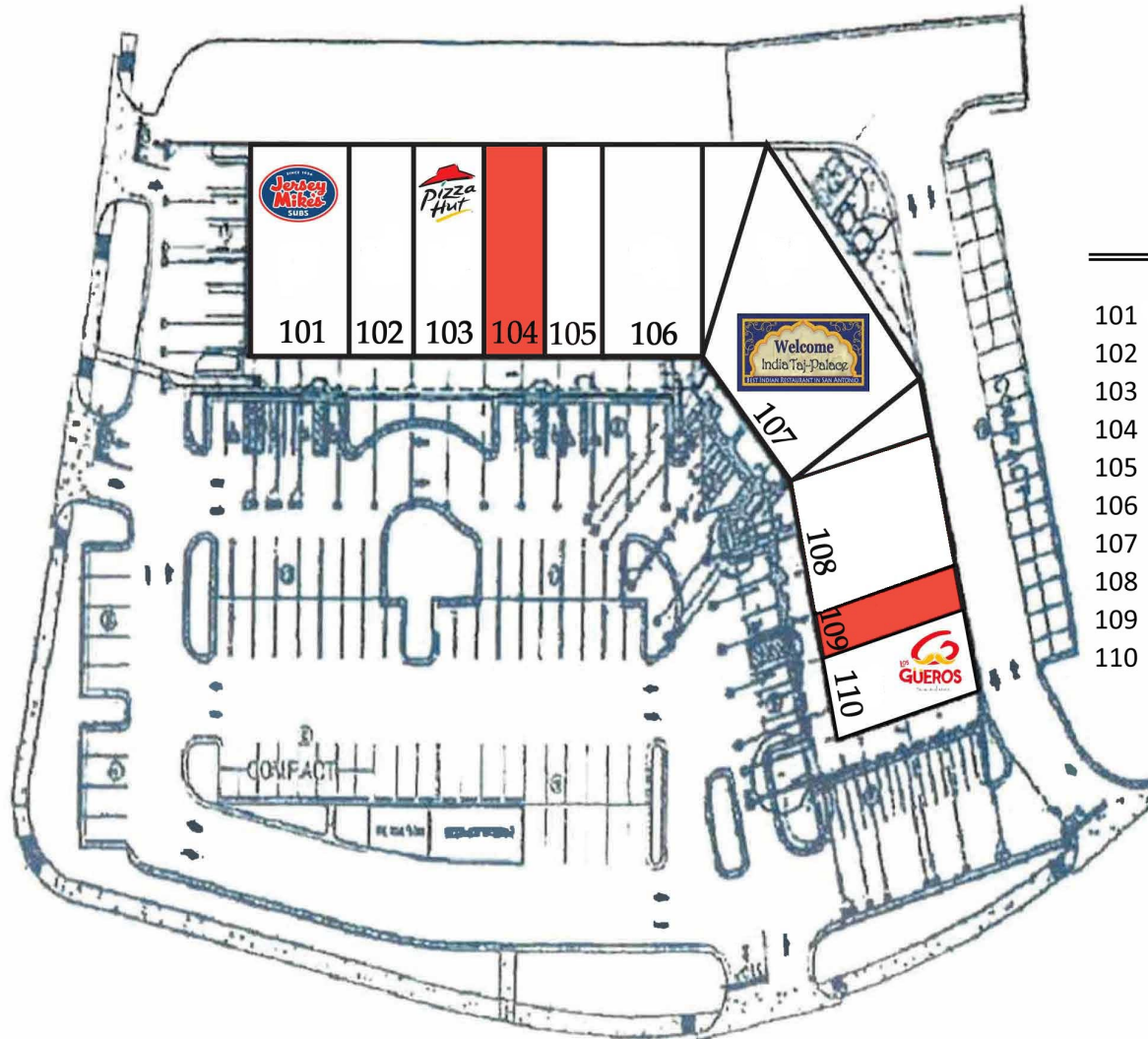
www.fulcrumsa.com

Marcus Shaffer
210.317.5563
marcus@fulcrumsa.com

fulcrum
PROPERTY GROUP INC

Stonehue Shopping Center

Site Plan

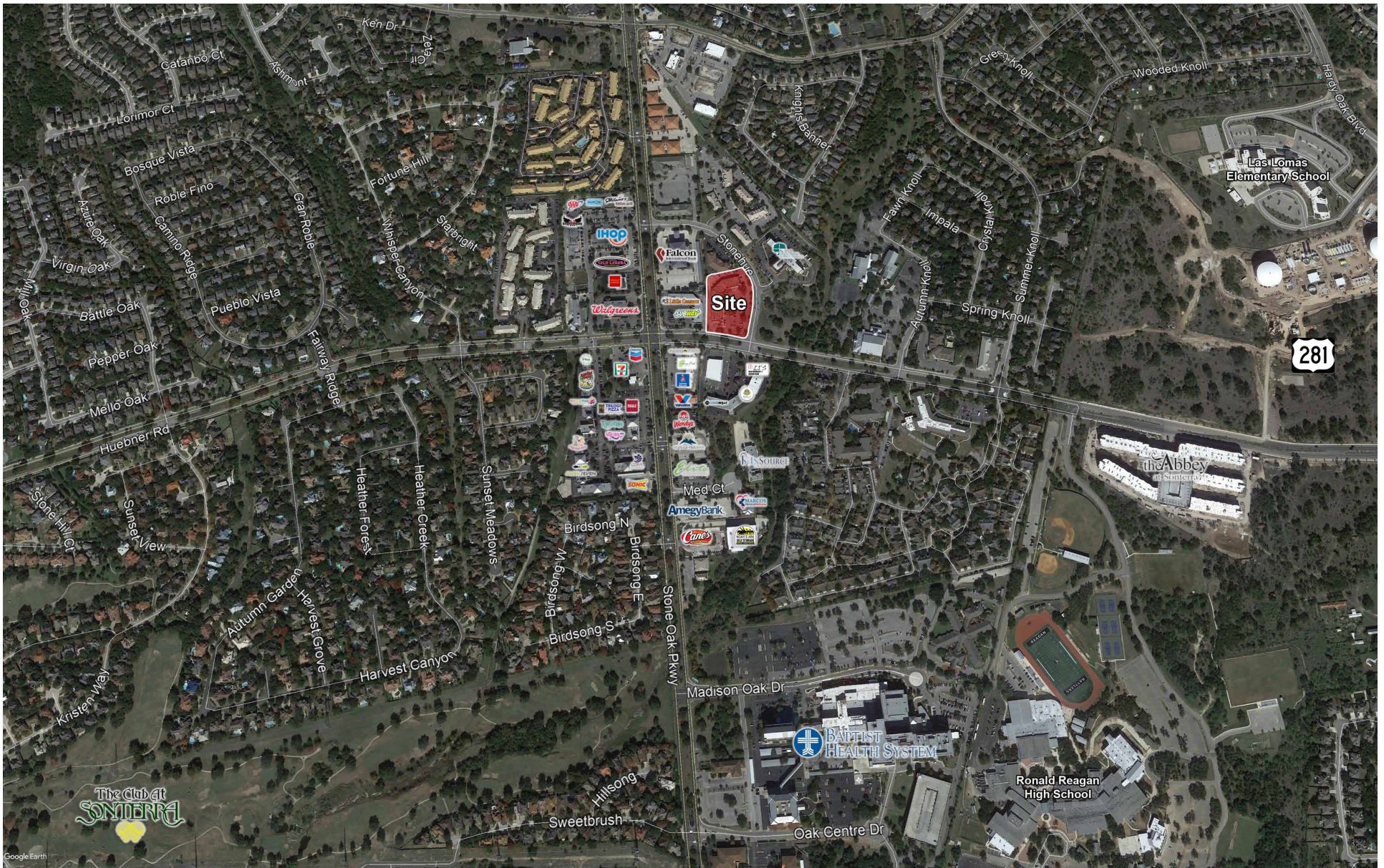


Current Tenants

101	Jersey Mike's	1,816 SF
102	Austin Driving School	1,542 SF
103	Pizza Hut	1,800 SF
104	Available	1,500 SF
105	Nova Head Spa	1,500 SF
106	Indo Pak Grocery	3,297 SF
107	India Taj Palace	4,376 SF
108	Region 3 Fitness	2,100 SF
109	Available	1,641 SF
110	Guero's Mexican Restaurant	1,542 SF

Stonehue Shopping Center

Location Aerial



10003 NW Military Hwy, Suite #2205
San Antonio, TX 78231

t 210.593.0777
f 210.593.0780

www.fulcrumsa.com

Marcus Shaffer
210.317.5563
marcus@fulcrumsa.com

fulcrum
PROPERTY GROUP INC