

Culebra Point Shopping Center

11282 Culebra Rd, San Antonio, TX 78253



Space Available

- 1,300 sf

Year Built

- 2016

Features:

- Located one block off Loop 1604 at the lighted intersection of Culebra Rd. and Lone Star Parkway, adjacent to a high school
- Built in a dense residential and commercial area
- Excellent ingress/egress and visibility

Traffic Counts

- Culebra Road: 41,661 VPD
- W. Loop 1604 N: 90,645 VPD

Demographics	1 mile	3 mile	5 mile
Total Population	11,385	109,434	249,547
Total Households	4,227	36,460	83,718
Avg HH Income	\$87,892	\$96,430	\$96,243
Population Growth 2021-26	2.31%	2.00%	1.88%

Area Retailers:



10003 NW Military Hwy, Suite #2205
San Antonio, TX 78231

t 210.593.0777
f 210.593.0780

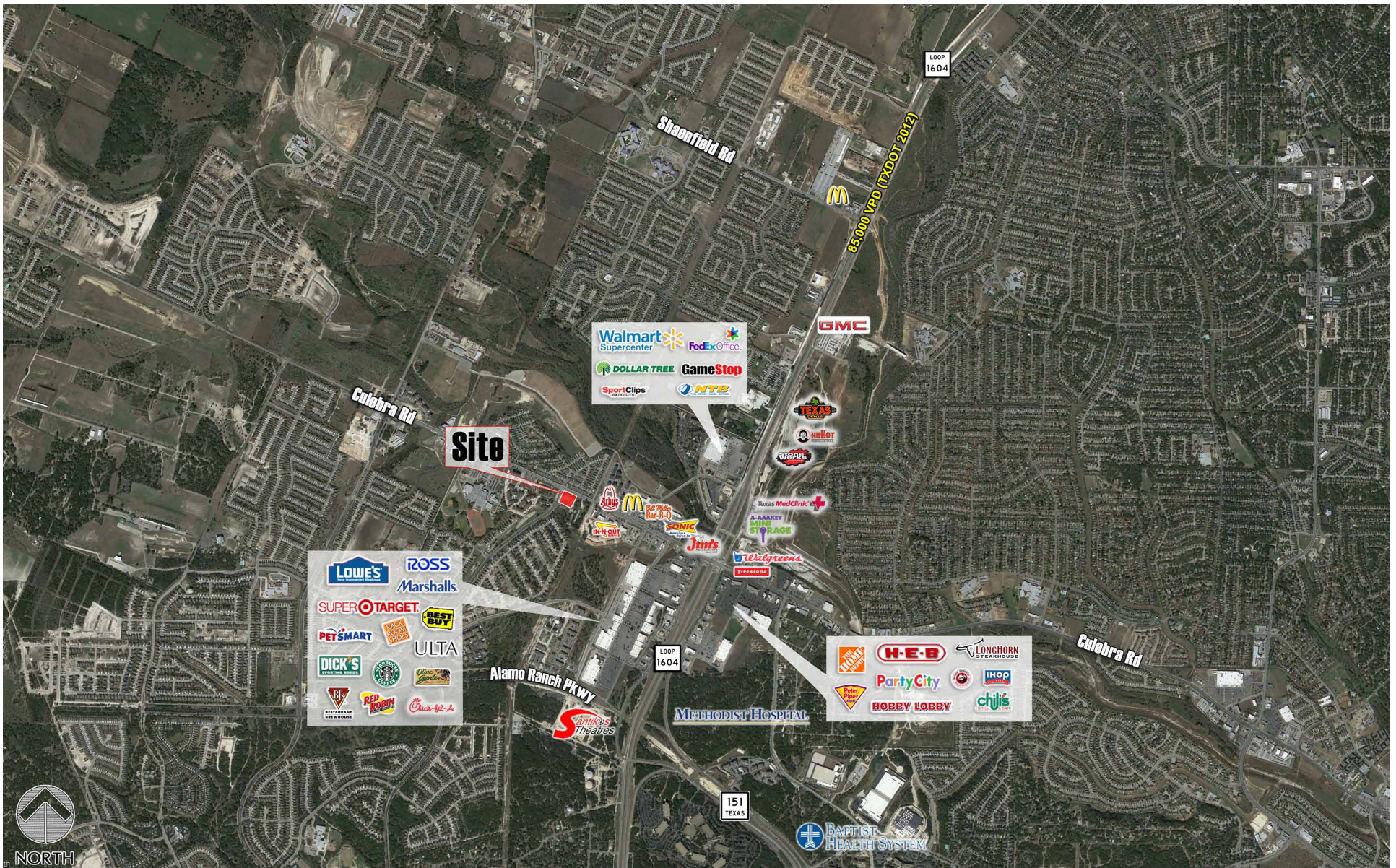
www.fulcrumsa.com

Bryan Parman
210.844.4575
bryan@fulcrumsa.com

fulcrum
PROPERTY GROUP INC

Culebra Point Shopping Center

Location Aerial



10003 NW Military Hwy, Suite #2205
San Antonio, TX 78231

t 210.593.0777
f 210.593.0780

www.fulcrumsa.com

Bryan Parman
210.844.4575
bryan@fulcrumsa.com

fulcrum
PROPERTY GROUP INC

Culebra Point Shopping Center

Site Plan

Culebra Road  41,661 DAILY

SITE PLAN KEY

PARCEL OUTLINE: 

LAND AREA: 1.25 AC

BUILDING AREA: 16,218 SF

INGRESS/EGRESS: 



10003 NW Military Hwy, Suite #2205
San Antonio, TX 78231

t 210.593.0777
f 210.593.0780

www.fulcrumsa.com

Bryan Parman
210.844.4575
bryan@fulcrumsa.com

fulcrum
PROPERTY GROUP INC

Culebra Point Shopping Center

Property Pictures



10003 NW Military Hwy, Suite #2205
San Antonio, TX 78231

t 210.593.0777
f 210.593.0780

www.fulcrumsa.com

Marcus Shaffer
210.317.5563
marcus@fulcrumsa.com

fulcrum
DEVELOPMENT