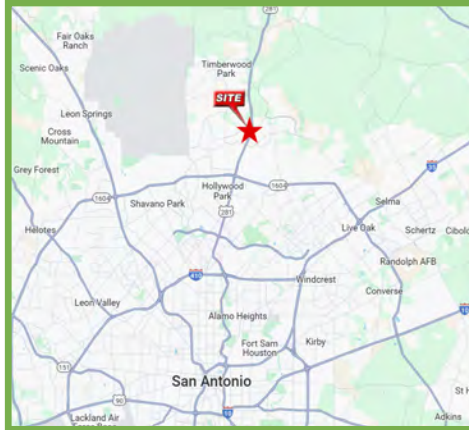


Pad For Sale

NWQ of Hwy 281 & Stone Oak Pkwy, San Antonio, 78258



Location:

- West side of Hwy 281 just North of Stone Oak Pkwy

Lot Size:

- 1.174 Acres

Asking Price:

- Call for pricing

Zoning:

- C-3 (Commercial)

Utilities:

- Water & Sewer - SAWS
- Electric & Gas - CPS

*Prospective buyers should retain an independent engineer to verify the location, accessibility and capacity of all utilities.

Traffic Counts

- Stone Oak Pkwy: 13,074 VPD
- US Hwy 281 North: 87,259 VPD

Demographics	1 mile	3 mile	5 mile
Total Population	5,782	73,655	145,834
Total Households	2,123	25,551	52,395
Avg HH Income	\$113,186	\$119,267	\$116,302

Area Retailers:



10003 NW Military Hwy, Suite #2205
San Antonio, TX 78231

t 210.593.0777
f 210.593.0780

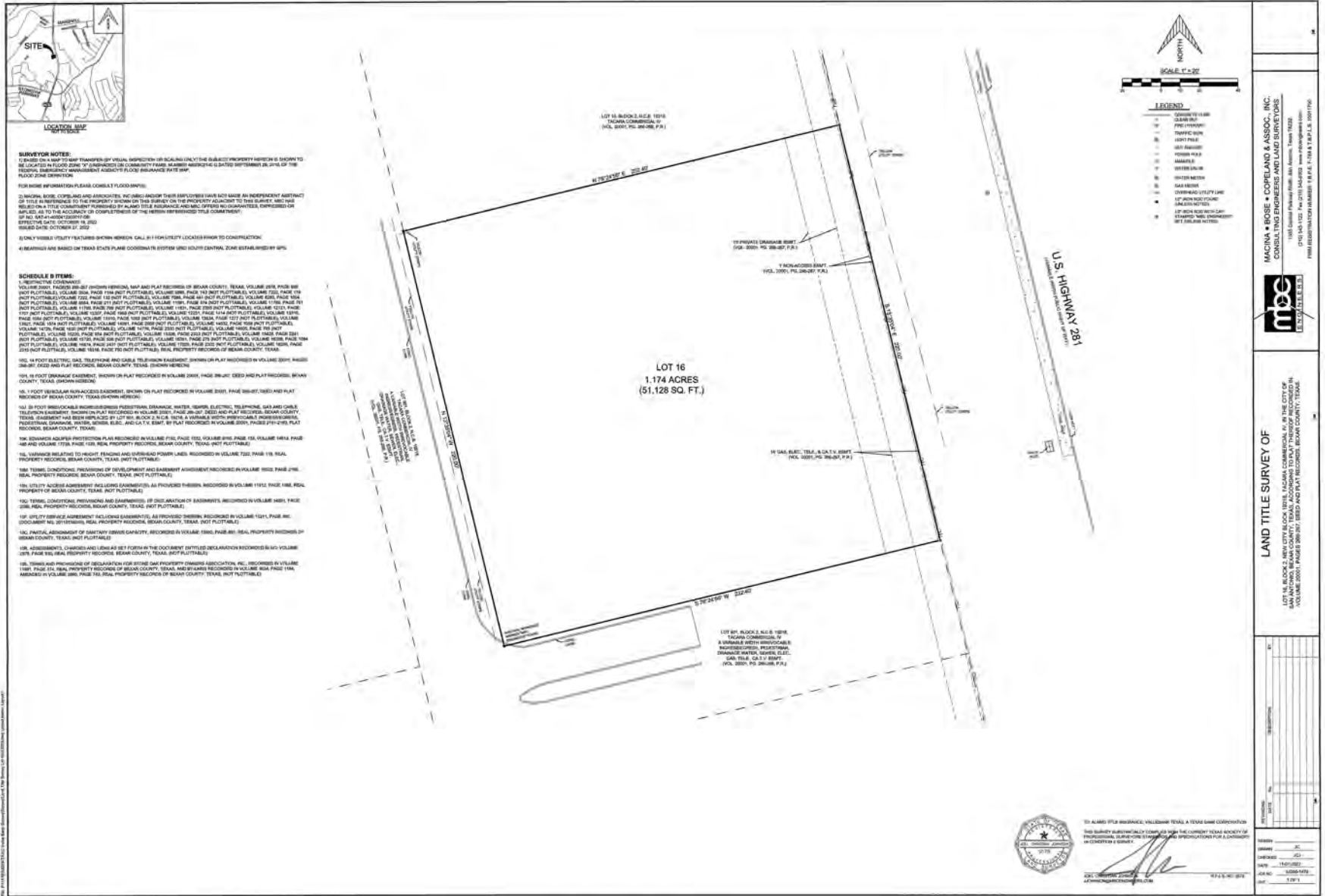
www.fulcrumsa.com

Ryan Bader
210.885.1364
ryan@fulcrumsa.com

fulcrum
PROPERTY GROUP INC

Hwy 281 & Stone Oak Pkwy

Pad



10003 NW Military Hwy, Suite #2205
San Antonio, TX 78231

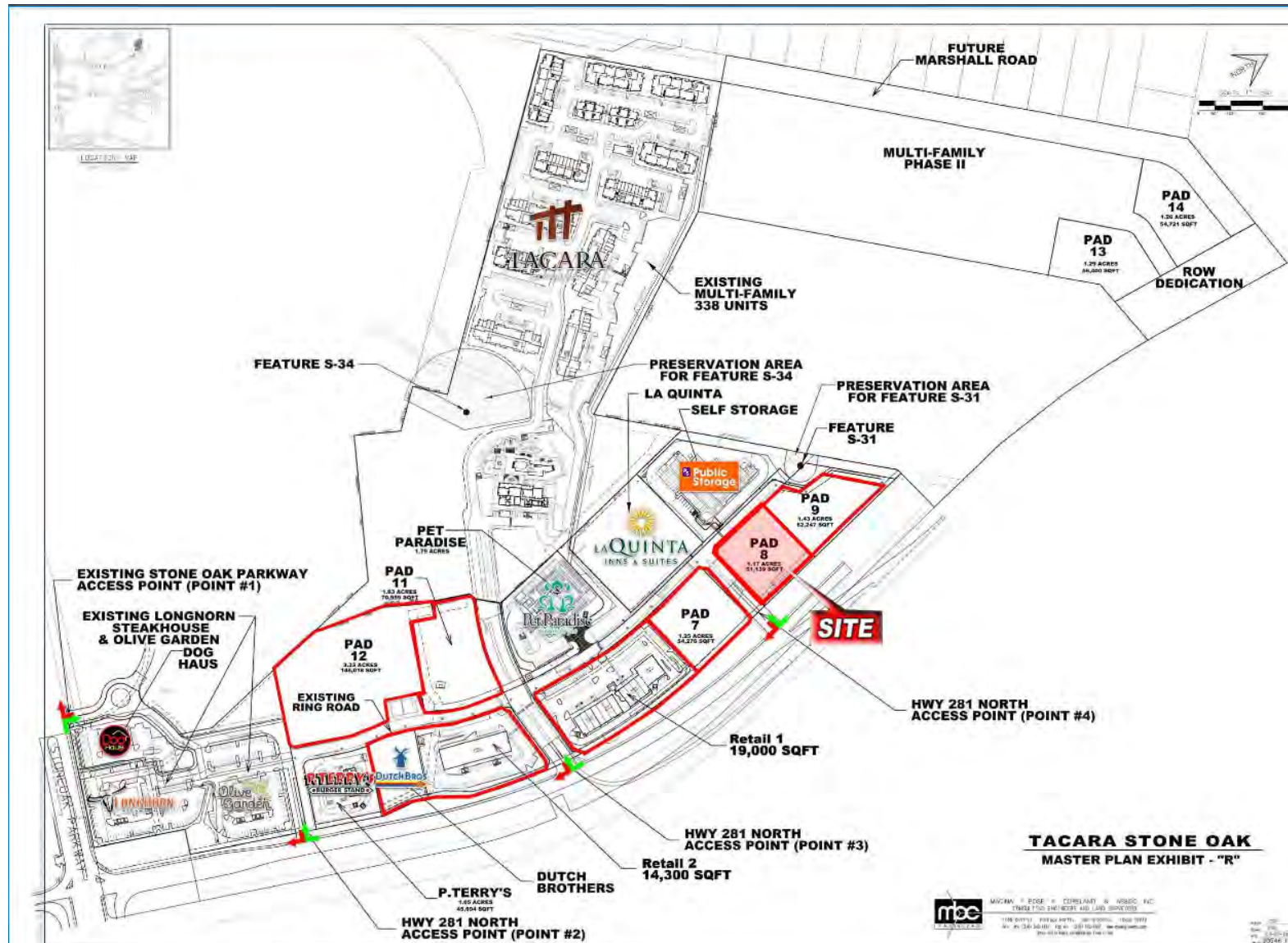
t 210.593.0777
f 210.593.0780

www.fulcrumsa.com

Ryan Bader
210.885.1364
ryan@fulcrumsa.com







Hwy 281 & Stone Oak Pkwy

Site Aerial



10003 NW Military Hwy, Suite #2205
San Antonio, TX 78231

t 210.593.0777
f 210.593.0780

www.fulcrumsa.com

Ryan Bader
210.885.1364
ryan@fulcrumsa.com

fulcrum
PROPERTY GROUP INC